

Thermal Protector

ST-12 Series

Features

- Snap Action
- Automatic Reset
- Superior Heat Response
- Non-Phenolic Insulation
- Normally Closed

Applications

- Hair Dryers, Electric Fan Heaters, Popcorn Machines, Electric Ovens, Dish Dryers, Blower, Small Home Appliances, etc.

Heat Endurance

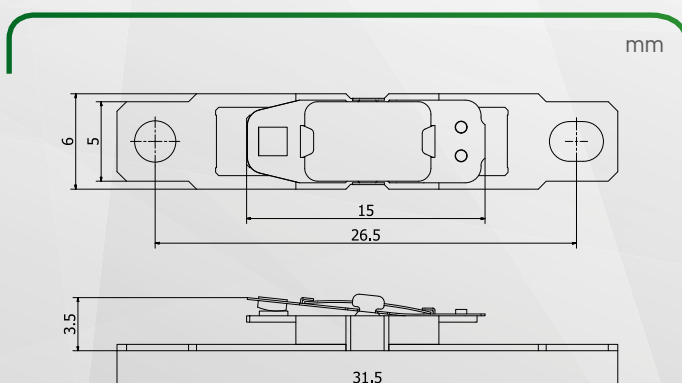
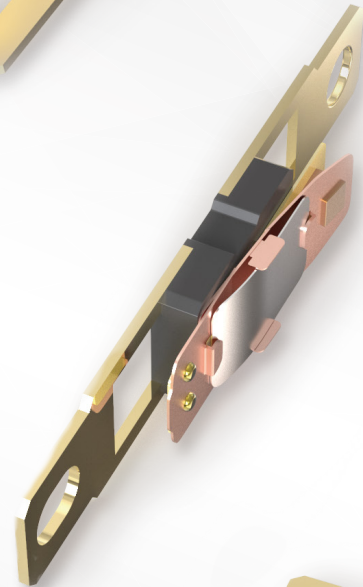
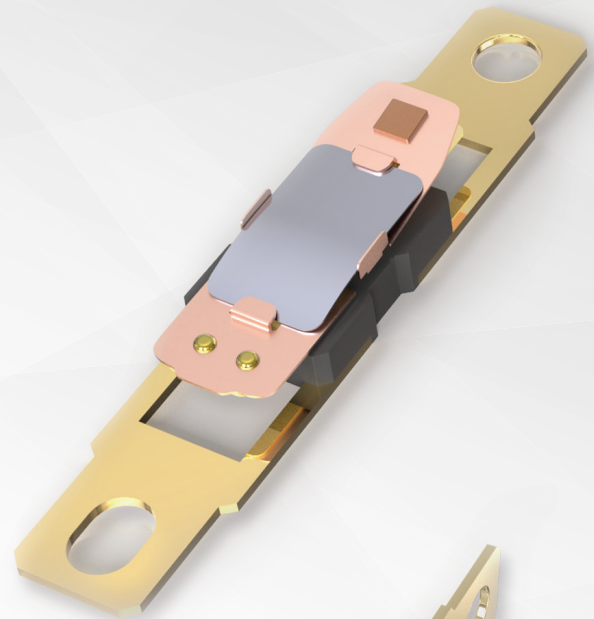
- Open Temp. +50°C/continuity, 200°C/1min

Life Cycle(Resistive Load)




- 15A/125V AC 10,000 cycles
- 10A/250V AC 10,000 cycles
- 13A/250V AC 10,000 cycles

Temperature Setting Range (at no load)

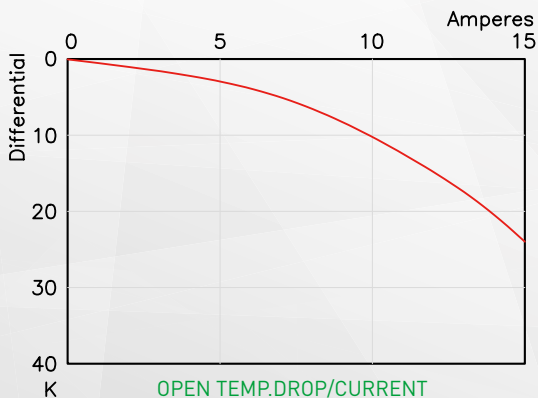
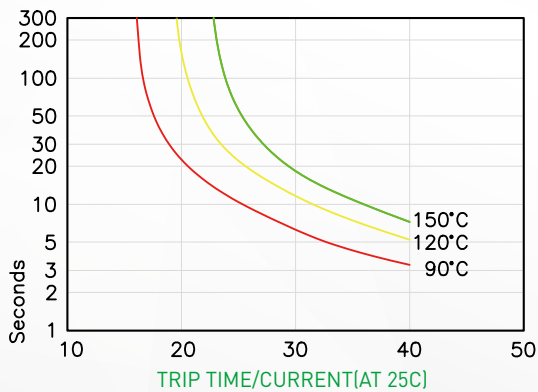
- 60°C ~ 150°C in increments of 5°C



Safety Approvals

Agency	Standard	Category	Electrical Ratings	Max Temp	File No.
	UL 873	Regulating Thermostat	AC 125V/15A, 250V/10A 10,000 cycles	150°C	E162183
	CSA C22.2 No.24				
	EN 60730-1 EN 60730-2-9	Thermal Cut-Out	AC 250V/13A(5A) Resistive(Inductive) 10,000 cycles	150°C	1916600-4510-0004
	GB/T14536.1-2008 GB/T14536.10-2008	Thermal Cut-Out	Resistive AC 250V/13A 10,000 cycles Inductive AC 250V/5A 10,000 cycles	150°C	CQC08002022429
	K60730-1 K60730-2-9	Thermal Protector	AC 250V/13A 10,000 cycles	150°C	ZH02003-10002
		Thermal Cut-Out	Resistive AC 125V/15A 10,000 cycles	150°C	JET-14P0127(J-198)

Characteristics



Applications



SEKI America

1512 Artaius Pkwy, Ste 201, Libertyville, IL 60048

+1-847-281-0308

sales@sekiamerica.com

+1-847-737-7518

www.sekiamerica.com

WARNING You may happen to encounter counterfeits of SEKI products in the market, all of which cause a serious damage by their serious defectives in quality. Therefore it is strongly recommended that you purchase authentic SEKI products from our AUTHORIZED distributors.